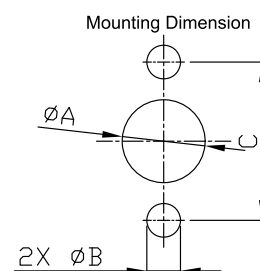
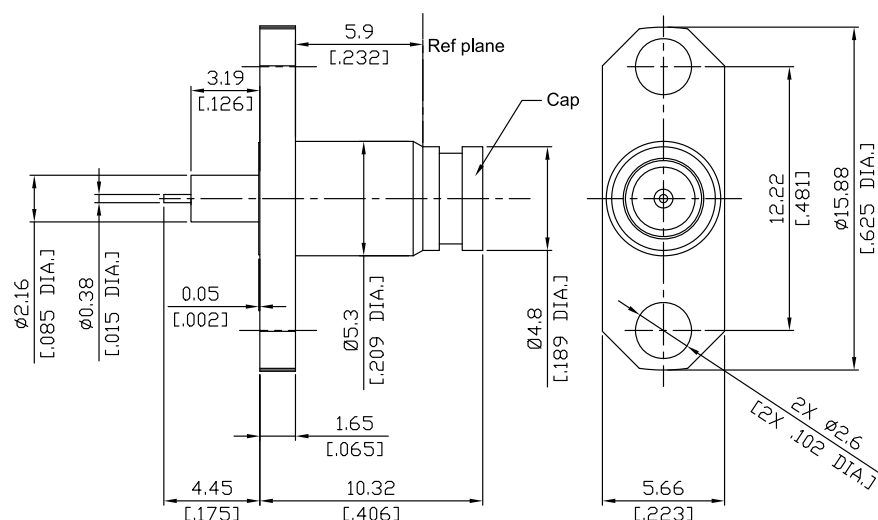


SMP Plug limited Detent Connector Solder Attachment 2 Hole Flange Mount  
Stub Terminal, 12.22mm ( .481 inch) Hole Spacing

**SMP1GTA50-LD1032A / 91**



	mm		inch	
	Max.	Min.	Max.	Min.
A	4.2	4.1	.165	.161
B	2.7	2.6	.106	.102
C	12.25	12.15	.482	.478

All dimensions are in mm [inch]

Tolerances according to DIN ISO 2768-mH

**Interface**

According to

MIL-STD-348A/326 (Limited Detent)

**Electrical Data**

Impedance

50 Ω

Frequency

DC to 18 GHz

VSWR (Return Loss)

≤ 1.2 (≥ 20.83 dB)

Insertion Loss

≤ 0.1 x √f (GHz) dB

Insulation Resistance

≥ 5 GΩ

Center Contact Resistance

≤ 6.0 mΩ

Outer Contact Resistance

≤ 2.0 mΩ

Working Voltage (at sea level)

335 V rms

-VSWR in application depends decisive on cable assembly process-

**Material And Plating**

Piece Parts	Material	Plating
Centre contact	Beryllium Copper	Gold plating, 3 pinch (Non-magnetic nickel-phosphorus underplating, 80 pinch)
Body	Brass	Gold plating, 3 pinch
Insulator	PTFE	(Non-magnetic nickel-phosphorus underplating, 80 pinch)

SMP Plug limited Detent Connector Solder Attachment 2 Hole Flange Mount  
Stub Terminal, 12.22mm ( .481 inch) Hole Spacing

## SMP1GTA50-LD1032A / 91

### Mechanical Data

Coupling mechanisms	Snap-lock
Mating Cycles	≥ 500
Center contact captivation	≥ 7N
Engagement force - Limited detent	≤ 45N
Disengagement force- Limited detent	≥ 9N

### Environmental Data

Temperature Range	-65°C to +155°C
Thermal shock	MIL-STD-202, Method 107, Condition B
Vibration	MIL-STD-202, Method 204, Condition B
Shock	MIL-STD-202, Method 213, Condition A
Moisture Resistance	MIL-STD-202, Method 106
RoHS	compliant

### Packing

Single or 100